

RAAF Base Amberley

Proponent:
Australian
Government

The Royal Australian Air Force's RAAF Base Amberley is their largest base, employing over 5,000 people. It is 40km south-west of Brisbane on the outskirts of Ipswich. A large number of units call Amberley home:

Combat Support Group, Headquarters

- ◆ No 95 Wing, Headquarters

No 382 Squadron

– Contingency Response

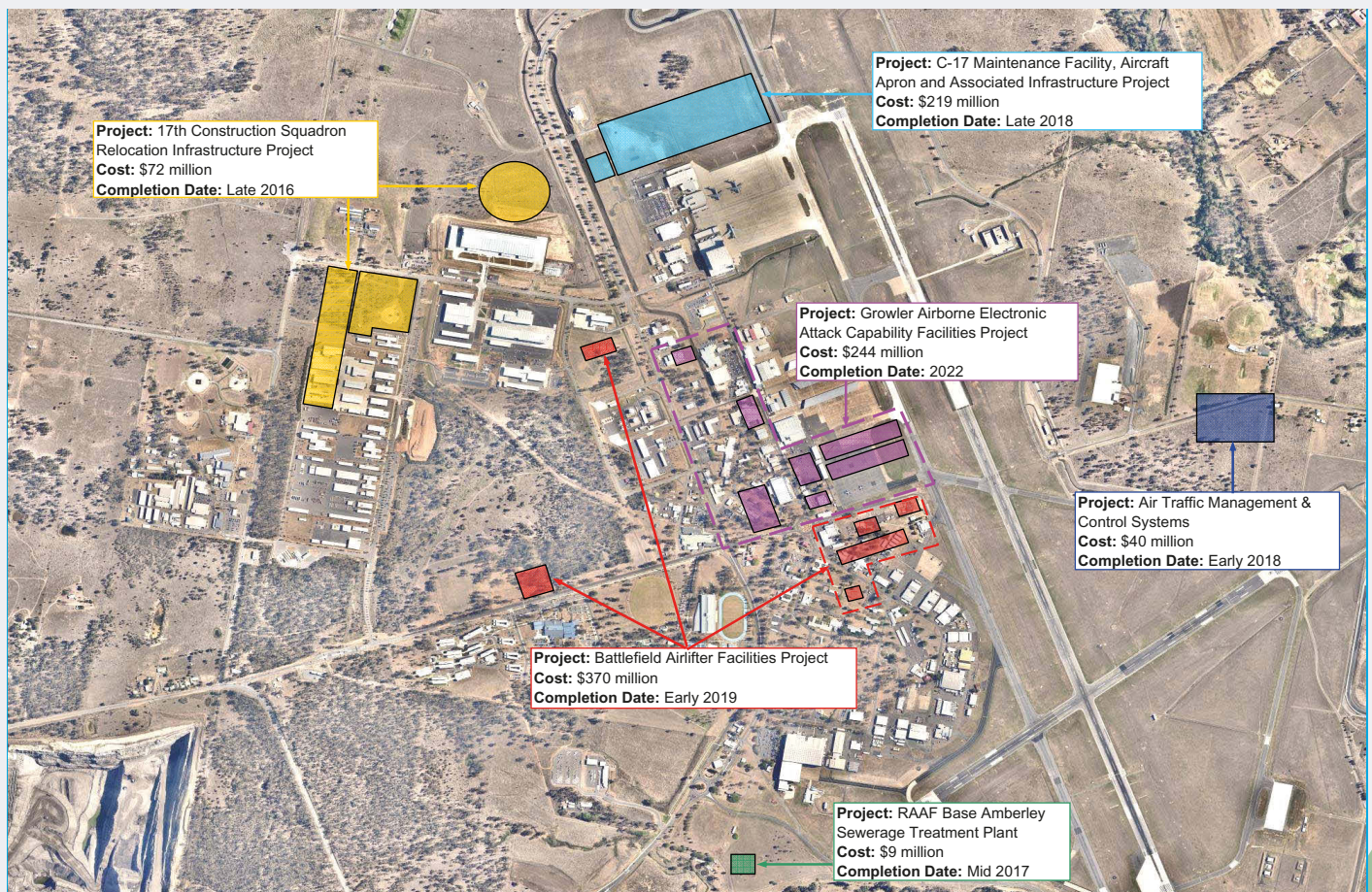
- ◆ No 295 Squadron
– Training and Standards
- ◆ No 1 Combat Communication Squadron Detachment Amberley
- ◆ No 2 Security Forces Squadron, Headquarters

No 96 Wing, Headquarters

- ◆ No 23 (City of Brisbane) Squadron
– Airbase Operations

Health Services Wing, Headquarters

- ◆ No 1 Expeditionary Health Squadron, Headquarters
- ◆ No 3 Aero-medical Evacuation Squadron Detachment Amberley
- ◆ Health Operational Conversion Unit



DISCLAIMER: The image is not to scale and has been provided for general information only. The project information is subject to change. The Sewerage Treatment Plant Project and C-17 Maintenance Facility, Aircraft Apron and Associated Infrastructure Project are currently unapproved and are awaiting approval from the Parliamentary Standing Committee on Public Works

Australia's largest RAAF Base – 5,500 ha total area.

Current Aircraft

- ◆ F/A-18F Super Hornet
- ◆ C-17 Globemaster
- ◆ KC-30
- ◆ HQ 5FLT – Heron

Future Aircraft

- ◆ EA-18G growler
- ◆ C-27 Spartan

Future Redevelopment Projects

- ◆ C-17 Facilities
- ◆ 17th Construction Squadron
- ◆ Sewage Treatment Plant
- ◆ Investment to house battlefield aircraft
- ◆ Relocation of 17th Construction Squadron from Holsworthy to Amberley

Cost of the Project

\$1bn

Job Creation

Currently 5,780.

Projected to >7,000 in 2020.

Time Frame

2016 – 2022.

RDAIWM Key Economic Theme

Growth Sector – Creating a balanced, growth economy for the region covering a range of key industries: health, education, industry, aviation.

Who are RDA Ipswich & West Moreton?

Regional Development Australia is a partnership between the Australian, State and Local Governments, to strengthen and sustain regional communities. Members of the committee come from across the four local government areas of Ipswich, Somerset, Lockyer Valley and Scenic Rim, with Council representatives and regional volunteers having extensive networks,

knowledge and experience in regional development and services.

With this base, RDA Ipswich & West Moreton seeks to achieve a vision that supports the desires and aspirations of the various communities in the region while recognising that our future is intricately linked to the wider South East Queensland (SEQ).

“In 2024 the Ipswich & West Moreton region has been able to successfully negotiate a balance between protection of natural assets and facilitating economic growth.”

Key Fact

The Royal Australian Air Force's RAAF Base Amberley is their largest base.



Contact Details

17 Lowry Street, North Ipswich QLD 4305
PO Box 2547, North Ipswich QLD 4305
(07) 3812 4144

Visit Online

www.rdaiwm.org.au



Regional Development Australia
IPSWICH & WEST MORETON INC