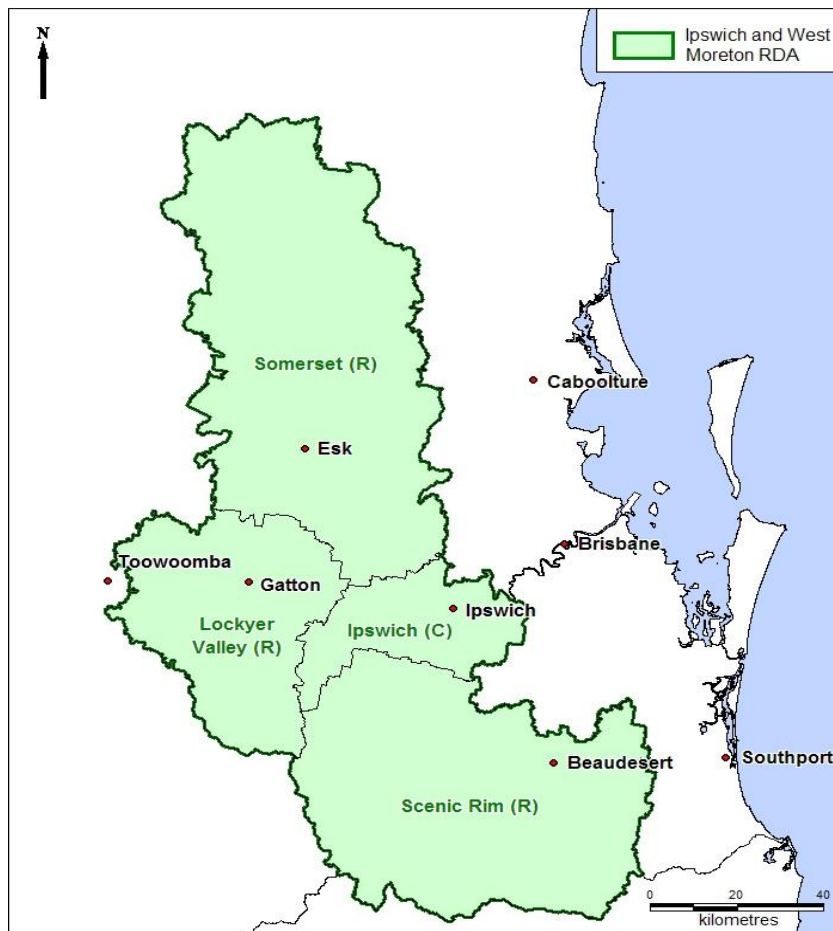


**Address to RDA Ipswich and West Moreton Regional Leaders Forum at Esk on  
Tuesday 7 May 2013  
by  
Jamie Quinn, Chair, Regional Development Australia Ipswich and West  
Moreton Inc.**

Where we are in South East Queensland (SEQ).



South East Queensland includes 10 Councils in all. Ipswich and West Moreton is the western half of SEQ and comprises 4 Councils – Ipswich, Scenic Rim, Lockyer Valley and Somerset. The other 6 SEQ Councils are Sunshine Coast, Moreton Bay, Brisbane, Logan, Redlands and Gold Coast.

Ipswich and West Moreton has a population of 270,000 and comprises 13,000 sq kms, which is about half the area of SEQ. It is experiencing significant growth at 3.2% pa for the period 2006/11, compared to 1.8% for Qld; and projected to be 4.3% pa for the period 2011/31 compared to 1.8% for Qld.

RDA Ipswich and West Moreton Inc. is one of 55 RDA regions covering the whole of Australia; one of 12 regions in Queensland; and one of 6 RDA regions in SEQ. RDA Committees are not established as an additional layer of bureaucracy. The RDA's are corporations under the Associations Incorporation Act and operate through a contract between the Australian Government, Queensland Government

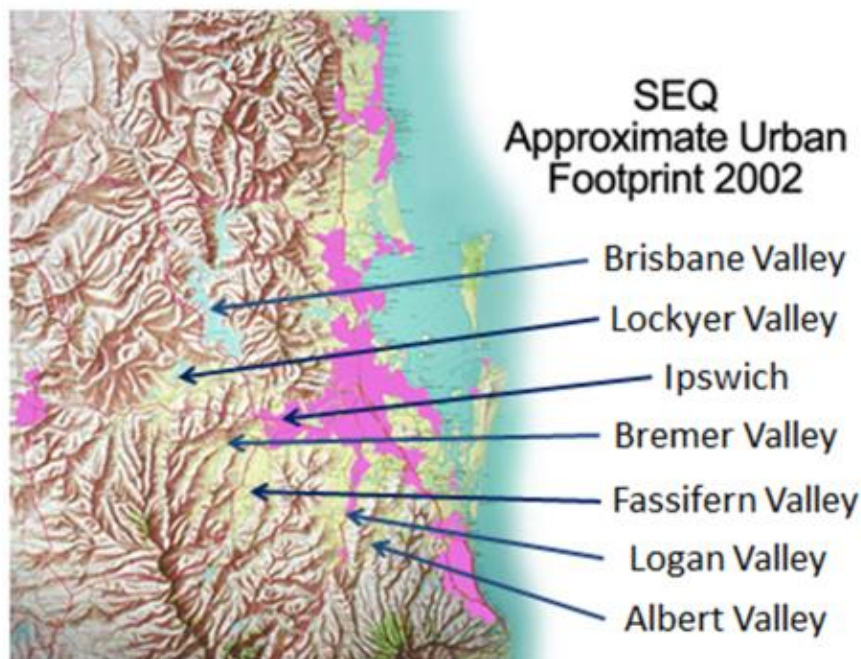
and the individual RDA. They operate on a very lean business model, with dedicated volunteer Management Committee members and a small staff.

The 6 SEQ RDA's share water catchments, flood plains, common biodiversity, a bulk treated water network, energy and communication networks, transport systems, commerce supply chains and an air shed. It is therefore critical that there is a mechanism for co-ordinating their input to the SEQ Regional Plan and Infrastructure Plan, which constitute the statutory sustainability plan for SEQ.

Because sustainable development is mainly influenced by large scale issues like water resources and catchments, flood plains, energy networks and freight networks, it is best planned at the regional scale, with sustainability strategies usually devolved to the local level. The Queensland Government's Sustainable Planning Act provides for regional planning across the various regions of Queensland, and land use planning at Council level. We are currently in the second 5 year SEQ Regional Plan and Infrastructure Plan, so it is a reasonably mature process in SEQ. Councils have been in the business of land use planning for many decades and most also have good strategic plans.

RDA's business is sustainable regional development with a focus on business growth, productivity and community wellbeing. RDA Committees exist to help integrate the regional development effort of all three levels of government. Also, because of our business and community engagement, we can provide feedback to Governments about how to improve services in the Ipswich and West Moreton region. Our RDA Roadmap is the means by which we plan and strategise how we do these things. It straddles national policy, SEQ regional planning and Council strategic and land use planning in order to facilitate integration of regional development effort.

This map helps show why sustainable development is best planned at a regional scale.



The Ipswich and West Moreton region is a classic example of a complex combination of distinct communities of interest comprising commercial centres, large scale residential, medium size towns, small rural villages, agricultural valleys and industrial parks. It has substantial transport, water, energy and communications networks. It also has some not so classic flooding and mining challenges.

We occupy half of South East Queensland, which is one of Australia’s fastest growing regions. We have:

- a strong manufacturing history and plenty of industrial land;
- the nation’s largest aerospace and defence base;
- a capable technical workforce;
- significant eco-tourism potential;
- Australia’s most secure urban water supply;
- a comprehensive transport network;
- a sound energy network;
- some of the nation’s most fertile agricultural valleys; and
- early establishment of the national broadband network.

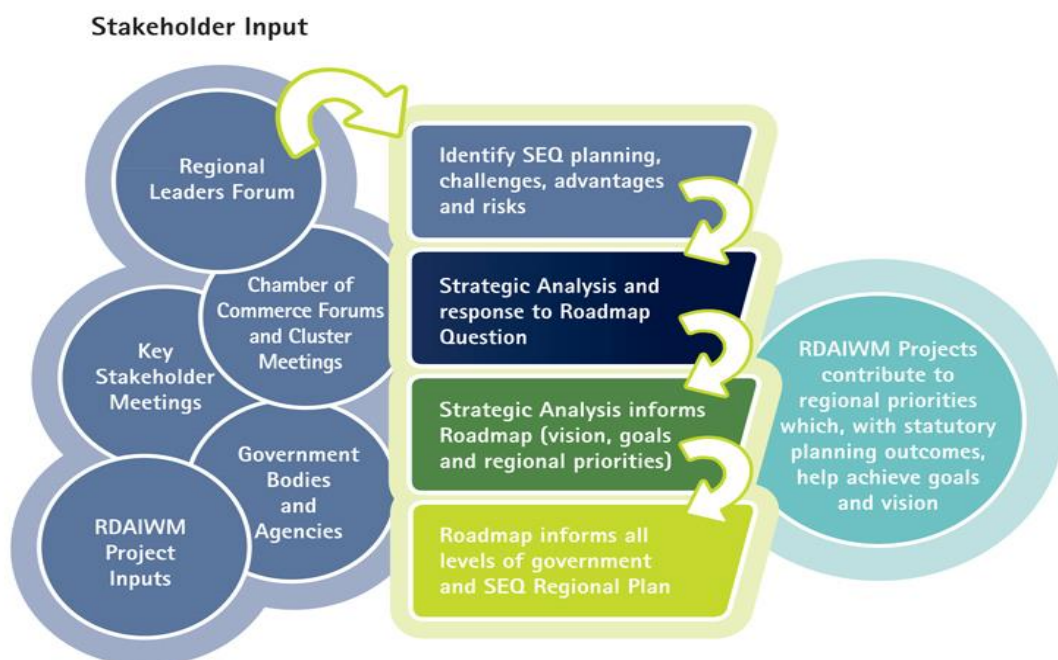
We are in our second SEQ Regional Plan. The first was the SEQ Regional Plan 2005-2026, and the second is the SEQ Regional Plan 2009-2031. Both have been supported by Infrastructure Plans.

So now, in 2013, we are looking forward to the next review of the SEQ Regional Plan. We have learnt a lot in recent years. RDA Ipswich and West Moreton didn’t even exist when the last SEQ Regional Plan was prepared.

The SEQ Regional Plan is the statutory sustainability plan for the SEQ region. RDA Ipswich and West Moreton’s objective is to ensure we competently contribute to the review of the Regional Plan with our focus on sustainability, business growth, productivity and community wellbeing.

The 2013/16 Roadmap will be our first 3 year regional strategic plan. Previous Roadmaps have been annual. It will be the basis for our contribution to the new SEQ Regional Plan. The SEQ regional planning process is fairly mature, but it has not been strong in two of the areas upon which our RDA charter requires our focus, namely business growth and productivity. We are all here today to help guide the development of this new 3 year Roadmap.

If we do our job well we will establish a Roadmap that contributes to the SEQ regional objectives and the national objectives that are relevant to this region. Set out below is the process we use to do this job.



It all leads to the SEQ Regional Plan. That is the statutory mechanism through which things can be achieved on the ground.

The current SEQ Regional plan objectives are currently set out as 12 desired regional outcomes dealing with sustainability and climate change; natural environment; regional landscape; natural resources; rural futures; strong communities; engaging Aboriginal and Torres Strait Islander peoples; compact settlement; employment location; infrastructure; water management; and integrated transport.

These objectives need to be improved; particularly in the areas of business growth and productivity.

At a higher level than regional objectives, national objectives are set out in Australian Government legislation, such as the Environment Protection and Biodiversity Conservation Act, and a range of policies dealing with issues like sustainable Australia and sustainable communities; national urban policy; aviation; ports; land freight; and digital economy.

As an example, some of the objectives of the National Urban Policy are:

- Improve labour and capital productivity
- Integrate land use and infrastructure
- Improve efficiency of urban infrastructure
- Protect and sustain our natural and built environments
- Reduce greenhouse gas emissions and improve air quality
- Manage our resources sustainably
- Increase resilience to climate change, emergency events and natural hazards
- Facilitate the supply of appropriate mixed income housing
- Support affordable living choices
- Improve accessibility and reduce dependence on private vehicles
- Support community wellbeing

Alignment of regional and national objectives will substantially facilitate the sustainable development of the region.

Remember, Ipswich and West Moreton is a complex combination of commercial centres, large scale residential, medium size towns, small rural villages, agricultural valleys and industrial parks; and we have substantial transport, water, energy and communications networks.

As we progress through the afternoon think about the things that matter most for our region's future. Things like - the region's development challenges – our competitive advantages – risks for the region's sustainability.

Regional challenges that might need to be better understood could include flood plains; CSG and mining; degradation of underground water; urban sprawl; loss of good quality agricultural land; loss of biodiversity; and the energy/food production relationship.

Our competitive advantages that we should be trying to optimise could include ongoing water security; energy security; industrial parks; transport connectivity; and a food security supply chain (eg. Lockyer Valley food bowl, and other good quality agricultural land, close and well connected to food processing capacity, large metropolitan consumer base and international ports).

When thinking about risks to the region's sustainability we need to firstly consider what are the region's sustainability issues. What are the things we need to protect long term (30, 60, 100+ years)? What are the things that can limit the capacity of future generations to meet their needs, unless we plan for and ensure their protection? They will likely include issues like water resources; waterway and Moreton Bay health; good quality agricultural land; biodiversity; and air shed quality.

That will lead us to think about risks we might have to manage to ensure the sustainability of Ipswich and West Moreton is not jeopardised. Those risks could include flood plains; CSG and mining; all the things that could be classified as inappropriate regional design ie. poor planning for water resources, good quality agricultural land, energy, land freight transport, air quality. They could also include things that could be classified as inappropriate urban design ie. poor planning for centres, residential, industrial parks, public transport, active transport, communication networks, water networks, waste recycling and disposal. Of course, they could also include the risk of failure to deliver our potential competitive advantages.

In planning for the sustainable development of the region we need to do many things. They can be summarised as our need to:

- understand the region's development challenges;
- optimise our competitive advantages; and
- manage the risks for the region's sustainability.