



# Beaudesert Bypass – Stage 2

**Proponent:** Scenic Rim Regional Council

## Project Description

Queensland Government and Scenic Rim Regional Council are planning for Beaudesert's future by preserving a transport corridor that will divert heavy vehicle traffic around the Beaudesert town centre.

The proposed corridor will start at the existing Mount Lindesay Highway, near the saw mill and run to the west of the town centre, crossing Beaudesert-Boonah Road. It will then rejoin the Mount Lindesay Highway south of Thiedeke Road.

The bypass is designed to reduce the flow of heavy vehicles from Bromelton and south of Beaudesert through the town centre by providing a more efficient, alternative route. Local traffic can continue to use the existing alignment in the town centre.

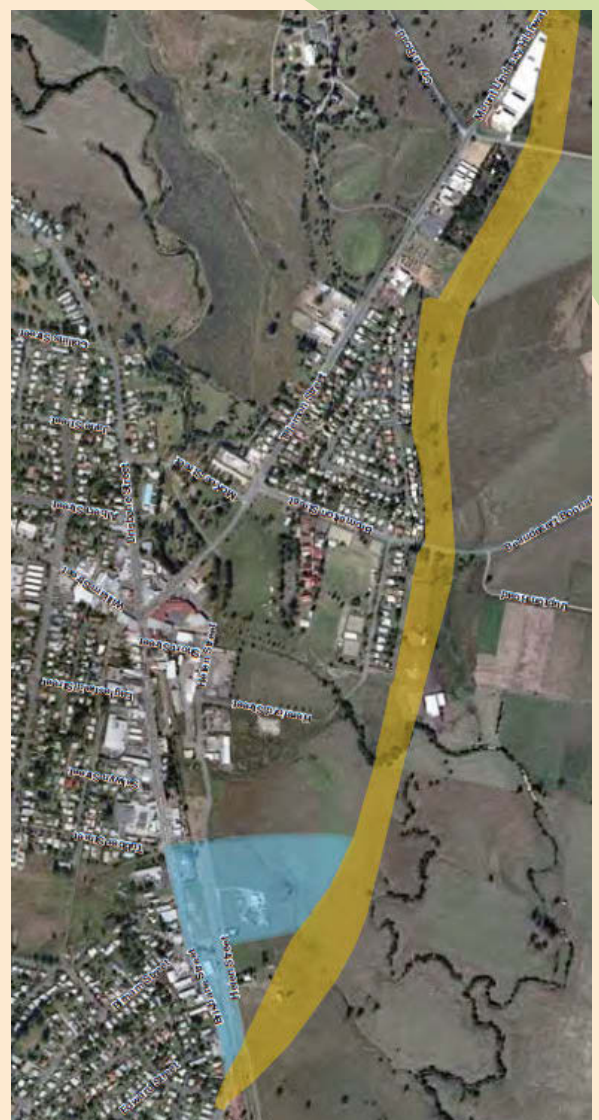
Stage 1 included project planning and preservation of the corridor while Stage 2 includes the construction of the bypass.

## Benefits to the Region

By diverting traffic away from the town centre, the bypass will significantly improve safety and enable local businesses to make better use of outdoor areas. Other significant benefits include:

- ◆ reducing the flow of heavy vehicles travelling through the Beaudesert town centre
- ◆ providing a dedicated route to service increasing freight demands in the Beaudesert and the Bromelton State Development Area
- ◆ local traffic can continue to use the existing alignment through the town centre
- ◆ improvement of safety for pedestrians and all road users in the town centre
- ◆ allowing Scenic Rim Regional Council to progress revitalisation of the Town Centre

The bypass will allow the revitalisation of the main street to proceed, resulting in increased day trips by visitors (an additional 4,000 tourists per day) as well as additional tourism expenditure of \$233,006 per annum.



## RDIAWM Key Economic Theme

**Infrastructure** – Investing in the critical infrastructure needed to support growth in a large region that covers rural through to urban areas.

## Key Fact

From 2011 to 2036, the population in Beaudesert is expected to grow from 12,705 persons to a population base of 31,669.



## Cost of the Project

# \$17m

## Job Creation

Approximately 85 jobs will be created during construction. The project will also boost development in the Bromelton State Development Area and other areas around Beaudesert. The Bromelton project alone is expected to generate 15,000 jobs by 2035.

## Time Frame

Construction of the town centre bypass is expected to commence in late 2016 and will take up to 12 months to complete.

Preliminary traffic modelling estimates that when the town centre bypass opens to traffic in 2017, up to 3,000 vehicles per day will travel on the route, increasing to 10,000 per day by 2031.

## Who are RDA Ipswich & West Moreton?

Regional Development Australia is a partnership between the Australian, State and Local Governments, to strengthen and sustain regional communities. Members of the committee come from across the four local government areas of Ipswich, Somerset, Lockyer Valley and Scenic Rim, with Council representatives and regional volunteers having extensive networks,

knowledge and experience in regional development and services.

With this base, RDA Ipswich & West Moreton seeks to achieve a vision that supports the desires and aspirations of the various communities in the region while recognising that our future is intricately linked to the wider South East Queensland (SEQ).

*"In 2024 the Ipswich & West Moreton region has been able to successfully negotiate a balance between protection of natural assets and facilitating economic growth."*

## Key Partners

- ◆ Australian Government
- ◆ Queensland Government
- ◆ Scenic Rim Regional Council
- ◆ State Department of Transport and Main Roads



## Contact Details

17 Lowry Street, North Ipswich QLD 4305  
 PO Box 2547, North Ipswich QLD 4305  
 (07) 3812 4144

## Visit Online

[www.rdaiwm.org.au](http://www.rdaiwm.org.au)

